

# SD-40T

## DRIVER UNIT WITH LINE TRANSFORMER



UDE's experience in the design of horn speakers has made it possible to make the **SD-40T** Driver, which is based on three pivotal characteristics: High Performance, Voice Intelligibility and Reliability. It also provides good music playback.

The **SD-40T** driver is coupled to the BP-30 and BG-50 exponential horns depending on the application.

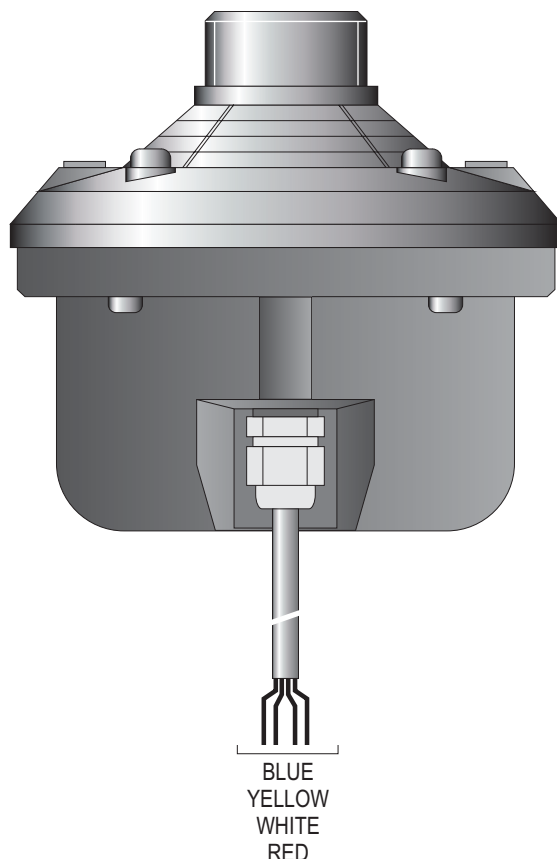
### FEATURES

- ✓ High performance
- ✓ Maximum mechanical and electrical resistance
- ✓ Penetrating sound that enhances voice
- ✓ Indoor and outdoor applications
- ✓ Long service life
- ✓ Reinforced phenolic resin moulded membrane
- ✓ Membrane auto-alignment device

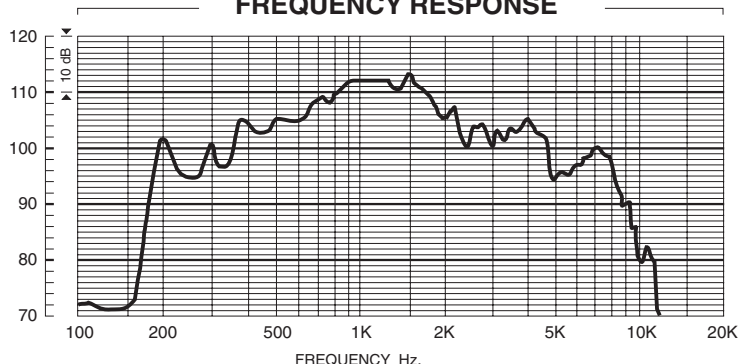
### SPECIFICATIONS

- Rated power: **40 W. RMS.**
- Impedance: 1k $\Omega$ , 500 $\Omega$ , 250 $\Omega$ .
- Frequency response: 160 at 11000 Hz.
- Sensitivity (\*): 110 dB 1 W./1 m./1,5 KHz.
- Driver Horn coupling: RW 1 3/8" (18 wires").
- Colour: Anthracite grey and black.
- Membrane: MSD-40T.
- Wiring: Lead. Delivered with 1 m. long cable.
- Dimensions:  $\varnothing$ 118 x 110 mm.
- Weight: 1,75 Kg.

(\*): Coupled to the BG-50 horn



### FREQUENCY RESPONSE



### POWER SELECTION

L.100V			
+			-
40W	20W	10W	Común Commun Common
250 $\Omega$	500 $\Omega$	1 K $\Omega$	
AZUL BLEU BLUE	AMARILLO JAUNE YELLOW	BLANCO BLANC WHITE	ROJO ROUGE RED

Electroacústica

**ude** UNION  
DESARROLLOS  
ELECTRONICOS S.A.

[www.udeaudio.com](http://www.udeaudio.com)

Main Office Avda. BARCELONA, 24  
08970 - SANT JOAN DESPÍ  
BARCELONA - ESPAÑA  
Tel: 34-93 477 28 54  
Fax: 34-93 261 17 52  
[ude@udeaudio.com](mailto:ude@udeaudio.com)

Madrid Delegation C/ LUIS I, 88, 3ª planta  
28031 - MADRID  
ESPAÑA  
Tel: 34-91 311 60 76  
Fax: 34-91 450 19 97  
[centro@udeaudio.com](mailto:centro@udeaudio.com)

ISO 9001  
BUREAU VERITAS  
Certification



UDE reserves the right to modify the technical characteristics of its products without previous notice

610.208A | 1 / 1