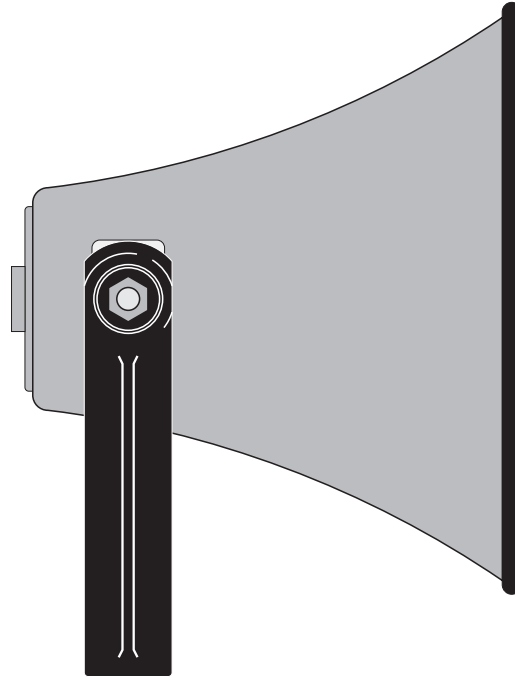


BP-30 BG-50

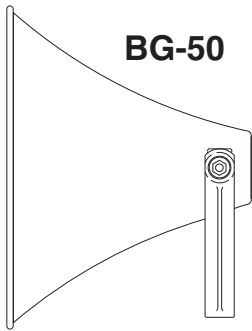


EXPONENTIAL HORN

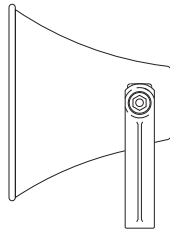


HORN

BG-50

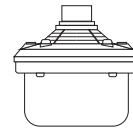


BP-30

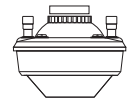


DRIVER UNIT

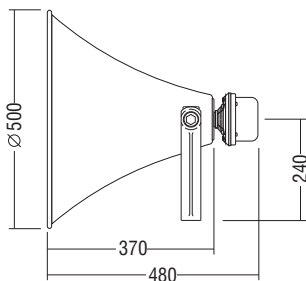
**SD-40T
SD-60T**



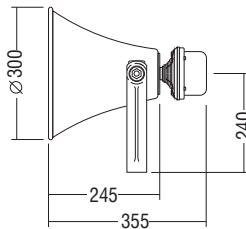
SD-40



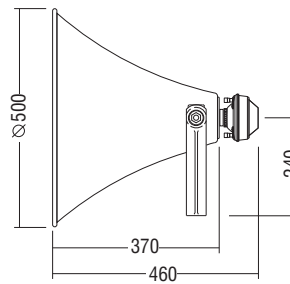
**Horn: BG-50
Driver unit: SD-40T / SD-60T**



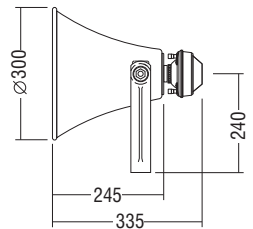
**Horn: BP-30
Driver unit: SD-40T**



**Horn: BG-50
Driver unit: SD-40**



**Horn: BP-30
Driver unit: SD-40**



Electroacústica



www.udeaudio.com

Main Office Avda. BARCELONA, 24
08970 - SANT JOAN DESPÍ
BARCELONA - ESPAÑA
Tel: 34-93 477 28 54
Fax: 34-93 261 17 52
ude@udeaudio.com

Madrid Delegation C/ LUIS I, 88, 3ª planta
28031 - MADRID
ESPAÑA
Tel: 34-91 311 60 76
Fax: 34-91 450 19 97
centro@udeaudio.com

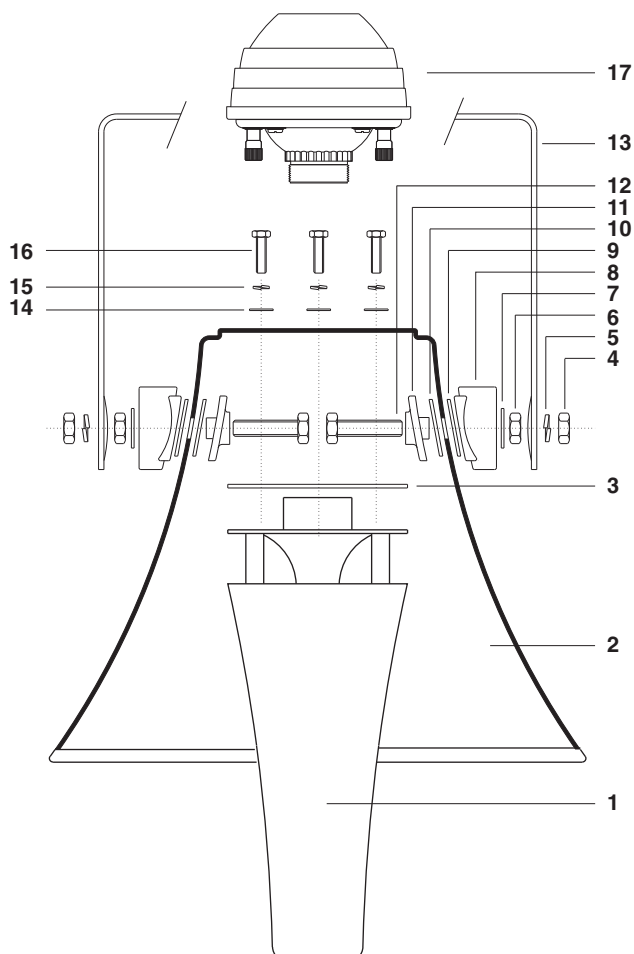
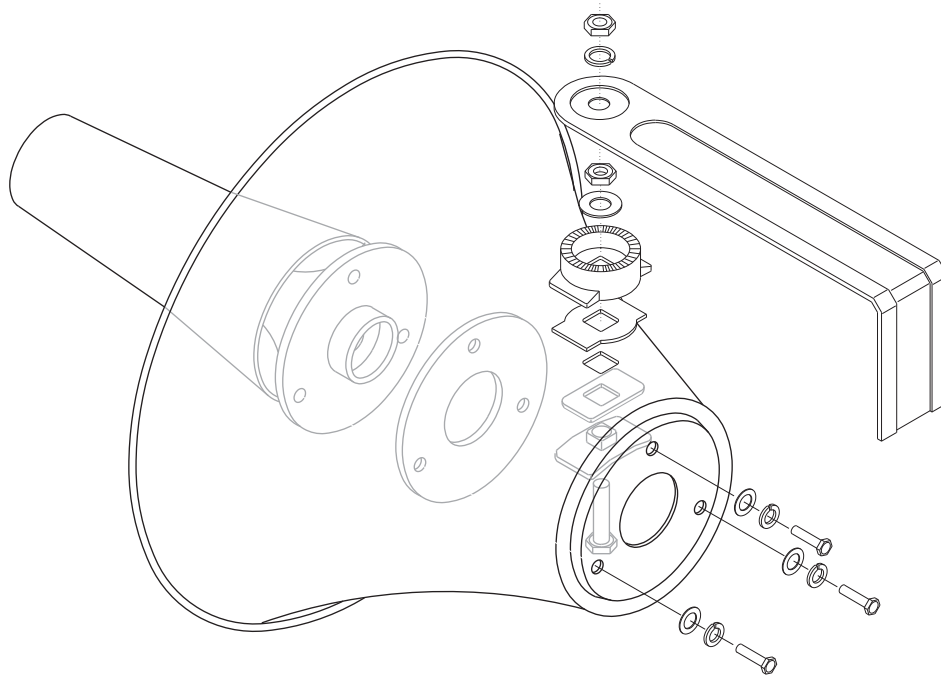
ISO 9001
BUREAU VERITAS
Certification



UDE reserves the right to modify the technical characteristics of its products without previous notice

610.030A | 1 / 2

HORN ASSEMBLY



ASSEMBLY OF THE UNIT

Tools required:

- Size 10 spanner.
- Size 14 spanner.

- 1.- Insert the screw (12) into the inside support (11) and the rubber washer (10).
- 2.- Fit this unit to the square hole of the horn.
- 3.- Fit the rubber washer (9), the outside support (8), flat washer (7), the nut (6) and tighten.
- 4.- Repeat the procedure on the other side of the horn.
- 5.- Mount the cone (1) using the gasket (3), the flat washers (14), the grower washer (15) and the screw (16), taking care to line up the UDE anagram properly. Tighten.
- 6.- Fit the attaching flange (13) of the speaker and fix using the grower (5) and the nut (4) on each side, without tightening.
- 7.- Assemble the motor (17).