

AP-820

ACOUSTIC BOX



Two-ways acoustic box
for voice and music diffusion



CONNECTION

ude		AP-820	
20w	10w	5w	2,5w
500 Ω	1K	2K	4K
L. 100 V.			
		MADE IN SPAIN	CE

The acoustic box **AP-820** is designed for use in sound systems that require a high degree of intelligibility of the speech and good music sound.

It combines a very balanced, a esthetic and electroacoustic design with great ease of installation as well as positioning thanks to a ball and socket joint.

Built in plastic ABS, with a propylene loudspeaker and aluminium mode mounting bracket, it is highly suitable for a wide range of uses. These include a changing room, a swimming pool and other locals with high humidity.

TECHNICAL FEATURES

- Woofer:	5" (propylene).	- Acoustic pressure (1m / 1W / 1 kHz):	88 dB.
- Tweeter:	½" (mylar).	- Material:	Plastic ABS / metal.
- Power:	20 - 10 - 5 - 2,5 W rms. L100V.	- Colour:	Black.
- Power selection:	Rotatory switch selector.	- Size:	146 x 235 x 144 mm.
- Wiring:	Spring terminals.	- Weight:	1,890 Kgs.
- Frequency range:	120 Hz to 20 KHz.	- Mounting bracket included.	

Electroacústica



www.udeaudio.com

Main Office Avda. BARCELONA, 24
08970 - SANT JOAN DESPÍ
BARCELONA - ESPAÑA
Tel: 34-93 477 28 54
Fax: 34-93 261 17 52
ude@udeaudio.com

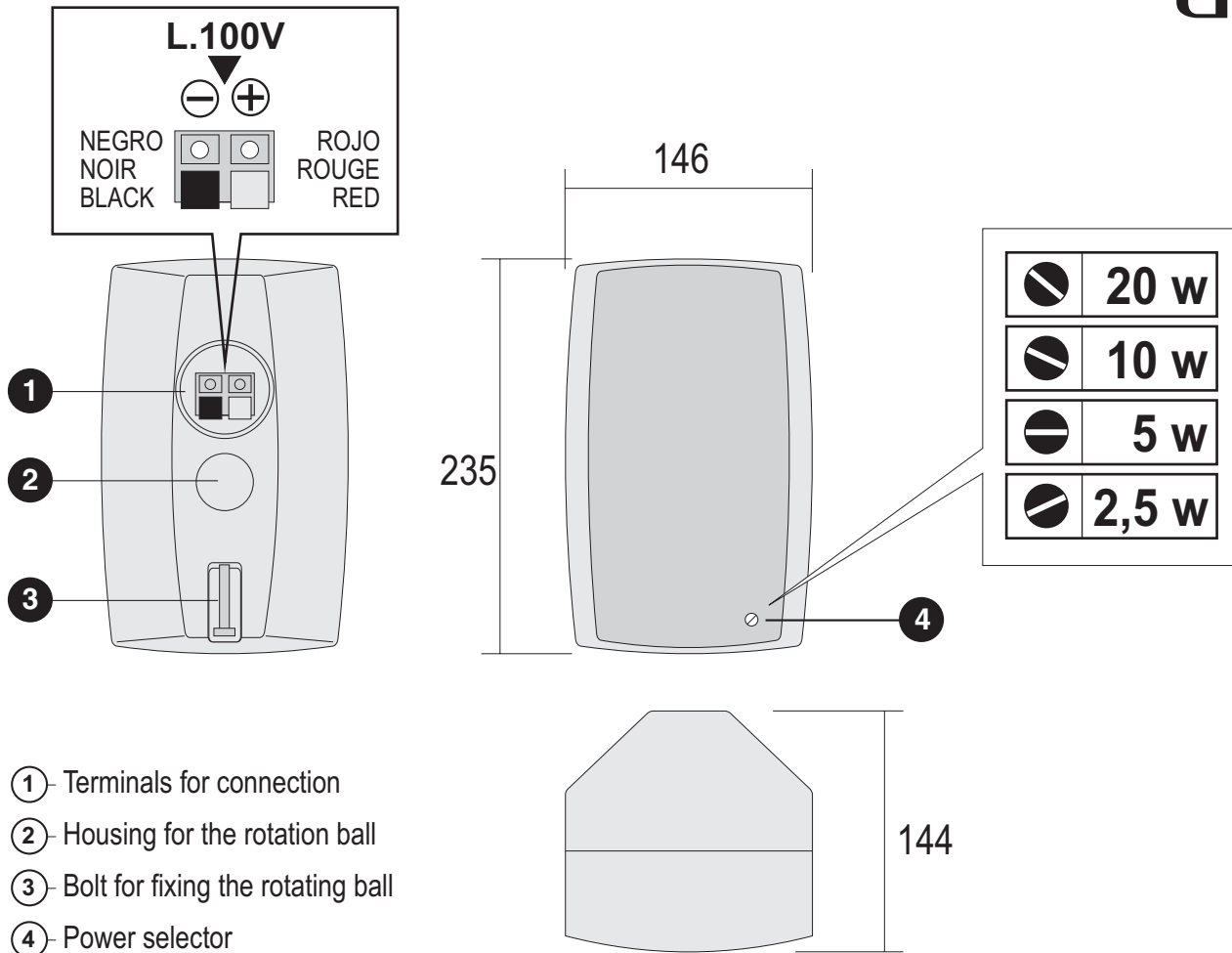
Madrid Delegation C/ LUIS I, 88, 3ª planta
28031 - MADRID
ESPAÑA
Tel: 34-91 311 60 76
Fax: 34-91 450 19 97
centro@udeaudio.com

ISO 9001
BUREAU VERITAS
Certification

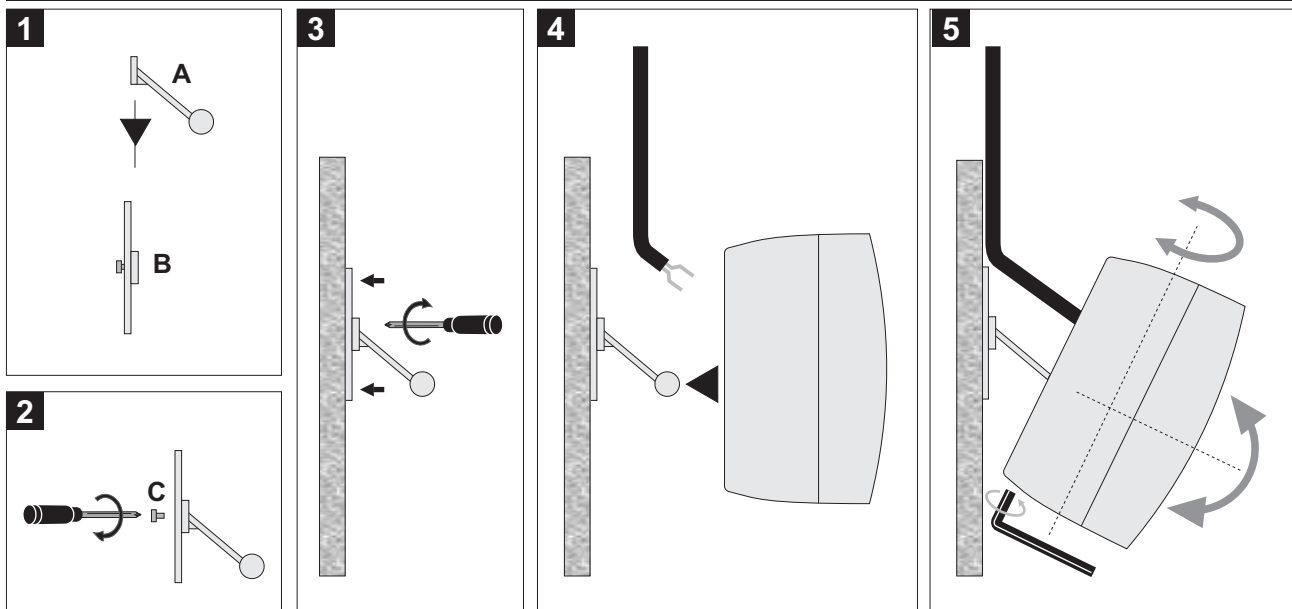


UDE reserves the right to modify the technical characteristics of its products without previous notice

610.295A | 1 / 2



ASSEMBLING



- 1** Assemble pieces A and B.
- 2** Fix both pieces with screw C.
- 3** Fix the mounting bracket in its desired position.
- 4** Connect the loudspeaker line (L 100V) in its socket. Insert the loudspeaker at the end of the rotating arm.
- 5** Direct the loudspeaker and fast the bolt D.